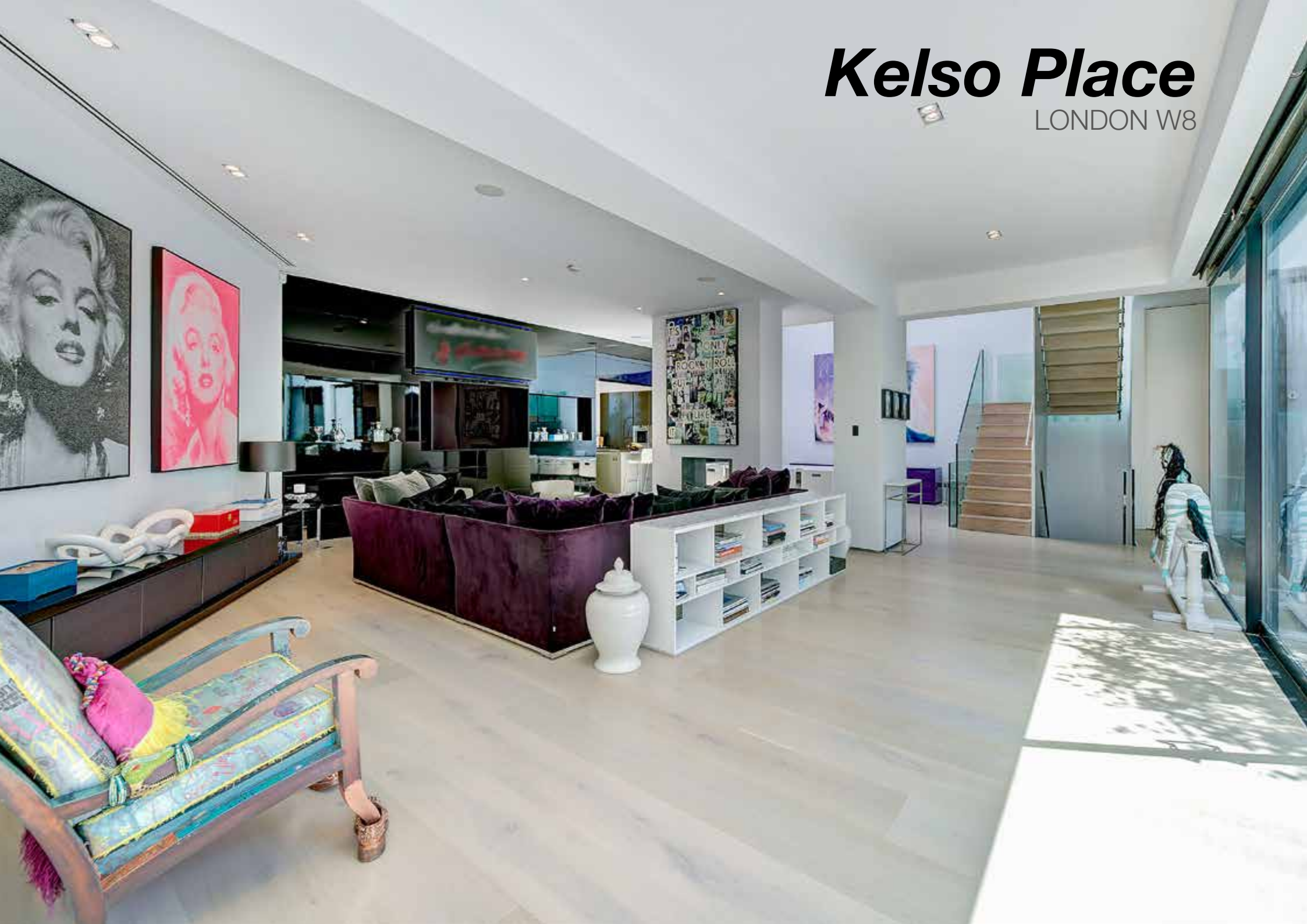


Kelso Place

LONDON W8



Kelso Place

LONDON W8

A spectacular low built modern house arranged over 3 floors with amazing volume, space and light. The house has seven bedrooms including the principle bedroom suite having access to a large south facing terrace which overlooks the courtyard garden. The ground floor creates an enormous impact with its vast open plan living and entertaining space. The property is going to appeal to those seeking a prime Kensington address and privacy being behind gates in a quiet cul de sac situated off Stanford Road.

ACCOMMODATION

- Entrance Hall
- Reception Room
- Kitchen
- Dining Room
- 7 Bedrooms
- 7 Bath/Shower Rooms (6 En-suite)
- Study
- Cinema / Family Room
- Gym
- Utility/Laundry Room
- Courtyard Garden
- Terrace, Parking

TERMS:

Tenure: Freehold

Guide Price: £14,950,000 Subject to Contract.









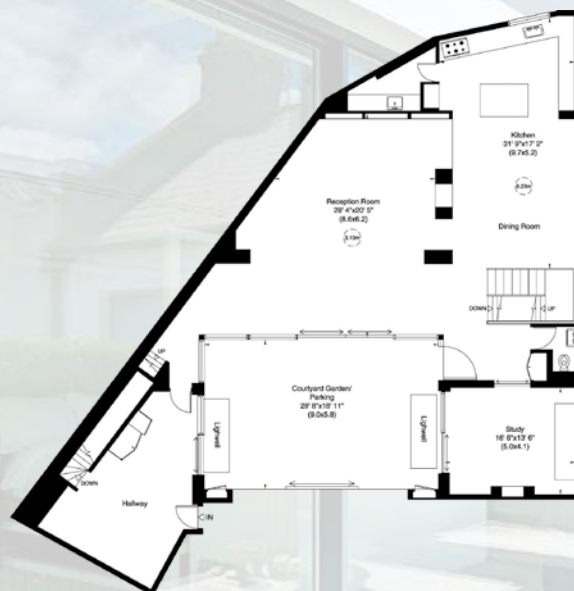
APPROXIMATE GROSS INTERNAL AREA

6,551 sq ft / 609 sq m Including Under 1.5m

6,522 sq ft / 606 sq m Excluding Under 1.5m



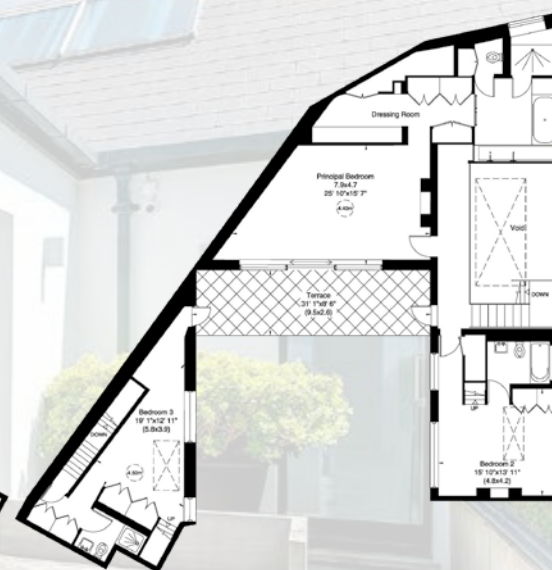
Lower Ground Floor



Ground Floor



Mezzanine



First Floor



Mezzanine

Score	Energy rating	Current	Potential
92+	A		
81-91	B		
69-80	C		
55-68	D	61 D	66 D
39-54	E		
21-38	F		
1-20	G		

All information in this document is correct to the best of our knowledge at the time of going to print. These particulars are set out as a general outline only for guidance to intending Purchasers or Lessees, and do not constitute any part of an offer or contract.



+44 (0) 7957 118 884

45 Pont Street, SW1X 0BD

thomas@holcroftpropertyconsultants.com