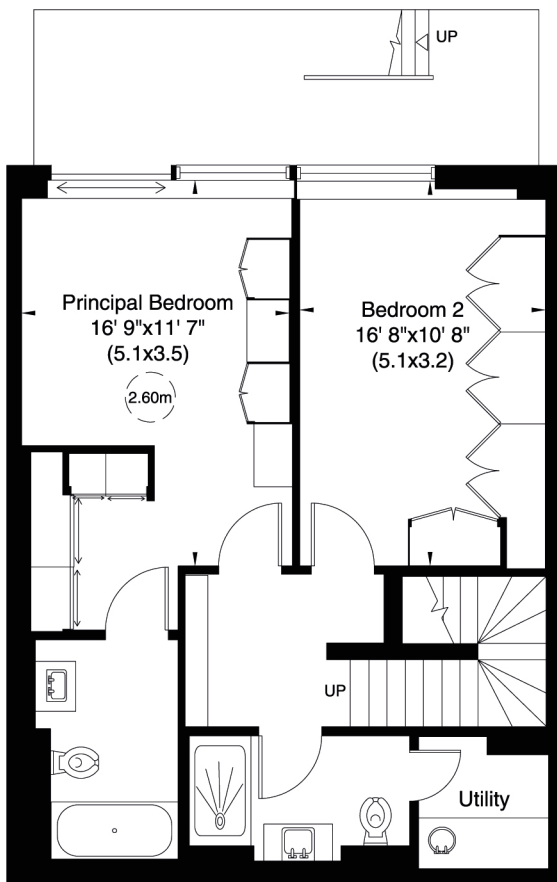


Trinity House, Kensington High Street, W14

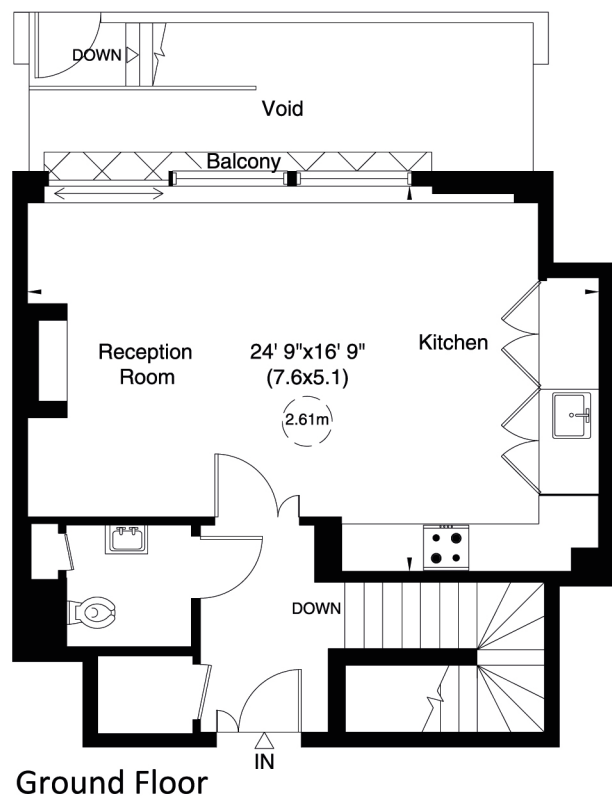
Approximate Gross Internal Area

111 sq m/ 1199 sq ft

Not to Scale, for identification only



Lower Ground Floor



Ground Floor

For guidance only and must not be relied upon as a statement of fact.

All measurements and areas are approximate only (and have been prepared in accordance with the current edition of the RICS Code of Measuring Practice).

